

TECHNICAL DATA SHEET

MCES DRAINAGE CHANNEL

Load Classification up to E600



MC Engineering
Solutions LTD

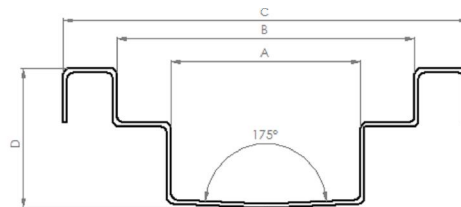
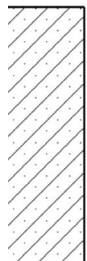
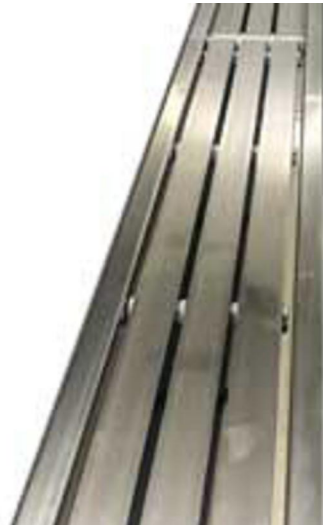
MC Engineering Solutions manufacture bespoke stainless steel drainage channel for demanding environments. The channels are designed and manufactured to fit in with the requirements of BS EN 1088:2003.

DESCRIPTION

The standard range of drainage channel, is manufactured in standard lengths of 2.5m, but any length is available from 250mm to 2500mm.

Drainage Grating Cells are no greater than 1m, this prevents drain covers from sliding, and limits the cover weight.

Suitable for hygienic environments accessed by all factory personnel upto forktruck access.(Loading A15 to E600)



DIMENSIONAL SPECIFICATION

• A, B, C & D are freely dimensionable, but are governed by the following constraints

1. C minus B must be ≥ 40 mm
2. B minus A must be ≥ 40 mm
3. D must be ≥ 50 mm

Recommended trench size are as follows

- a. C plus 200mm
- b. D plus 100mm

TECHNICAL SPECIFICATION

- Manufactured from 1.6mm stainless steel
- Grades 304 & 316 Stainless Steel - Confirm Material Compatibility Prior To Order

MC ENGINEERING SOLUTIONS LTD
UNIT 3 DAVIAN BUSINESS CENTRE
KILN LANE, STALLINGBROUGH
GRIMSBY
DN41 8DW

TEL : 01469 208010
EMAIL: INFO@MCESLTD.CO.UK
WEB: WWW.MCESLTD.CO.UK

TECHNICAL DATA SHEET

MCES DRAINAGE CHANNEL

Material Compatibility Chart



MC Engineering
Solutions LTD

For advice regarding the most suitable Stainless Steel for your application, please contact our specialist material engineers today to discuss your requirements.

email: info@mcesltd.co.uk

tel: 01469 208010

KEY

	RECOMMENDED
	SUITABLE HOWEVER CONTACT US FOR ADVICE
	NOT RECOMMENDED

REAGENT SUBSTRATE	S/S GRADE	
	304	316
ACETIC ACID		
ACETONE		
ALCOHOL		
ALUMINIUM CHLORIDE		
ALUMINIUM SULPHATE		
AMMONIA GAS (DRY)		
AMMONIUM CHLORIDE		
AMMONIUM HYDROXIDE		
AMMONIUM NITRATE		
AMMONIUM PHOSPHATE		
AMMONIUM SULPHATE		
AMMONIUM SULPHIDE		
AMYL CHLORIDE		
ANILINE		
BARIUM CHLORIDE		
BARIUM SULPHATE		
BEER		
BEEF SUGAR LIQUORS		
BENZENE		
BENZOIC ACID		
BORIC ACID		
BROMIC ACID		
BROMINE WATER		
BUTANE		
CALCIUM CARBONATE		
CALCIUM CHLORIDE		
CALCIUM HYDROXIDE		
CALCIUM HYPOCHLORITE		
CALCIUM SULPHATE		
CARBON BISULPHIDE		
CARBON TETRACHLORIDE		
CAUSTIC POTASH		
CAUSTIC SODA		
CHLORIDE (DRY)		
CHLORIDE (WET)		
CHLOROACETIC ACID		
CHLORO BENZENE		
CHLOROFORM		
CHROME ACID 50%		
CHROME ACID 10%		

REAGENT SUBSTRATE	S/S GRADE	
	304	316
CITRIC ACID		
CITRIC ACID CAN BE USED IN A SIMILAR WAY TO NITRIC ACID FOR PASSIVATION AND CLEANING OF STAINLESS STEEL.		
COPPER CHLORIDE		
COPPER CYANIDE		
COPPER NITRATE		
COPPER SULPHATE		
DISTILLED WATER		
ETHYL ACETATE		
ETHYLENE CHLORIDE		
ETHYLENE GLYCOL		
FATTY ACIDS		
FERRIC SULPHATE		
FLUORENE GAS		
FORMALDEHYDE		
FORMIC ACID		
FRUIT JUICES AND PULP		
GASOLINE		
GLYCERINE		
HYDROBROMIC ACID 20%		
HYDROCHLORIC ACID 40%		
HYDROCYANIC ACID		
HYDROGEN PEROXIDE		
IODINE		
KEROSENE		
LACTIC ACID		
LINSEED OIL		
MAGNESIUM CHLORIDE		
MAGNESIUM SULPHATE		
MALEIC ACID		
METHYL CHLORIDE		
MILK		
MURIATIC ACID		
NICKEL CHLORIDE		
NICKEL SULPHATE		
OIL AND FATS		
OLEIC ACID		
OXALIC ACID		
PERCHLORIC ACID		
PETROLEUM OILS		
PHENOL 5%		
PHOSPHORUS TRICHLORIDE		

REAGENT SUBSTRATE	S/S GRADE	
	304	316
PHOTOGRAPHIC SOLUTIONS		
PITRIC ACID		
POTASSIUM CARBONATE		
POTASSIUM CHLORIDE		
POTASSIUM CYANIDE		
POTASSIUM DICHROMATE		
POTASSIUM HYDROXIDE		
POTASSIUM PERMANGANATE		
POTASSIUM SULPHATE		
SEA WATER		
SEWERAGE		
SILVER NITRATE		
SILVER SULPHATE		
SODIUM BICARBONATE		
SODIUM BISULPHITE		
SODIUM CARBONATE		
SODIUM HYDROXIDE		
SODIUM HYPOCHLORITE		
SODIUM SULPHATE		
SODIUM SULPHIDE		
SODIUM SULPHITE		
SODIUM THIOSULPHATE		
STANNOUS CHLORIDE		
STEARIC ACID		
SULPHUROUS ACID		
SULPHUR		
SULPHUR DIOXIDE (DRY/WET)		
SULPHURIC ACID		
TANNIC ACID		
TANNING LIQUORS		
TRICHLOROETHYLENE		
TURPENTINE		
UREA		
URINE		
VINEGAR		
WATER (FRESH/MINE/SALT)		
WHISKY		
WINES		
ZINC CHLORIDE		
ZINC SULPHATE		

MC ENGINEERING SOLUTIONS LTD
UNIT 3 DAVIAN BUSINESS CENTRE
KILN LANE, STALLINGBROUGH
GRIMSBY
DN41 8DW

TEL : 01469 208010
EMAIL: info@mcesltd.co.uk
WEB: www.mcesltd.co.uk